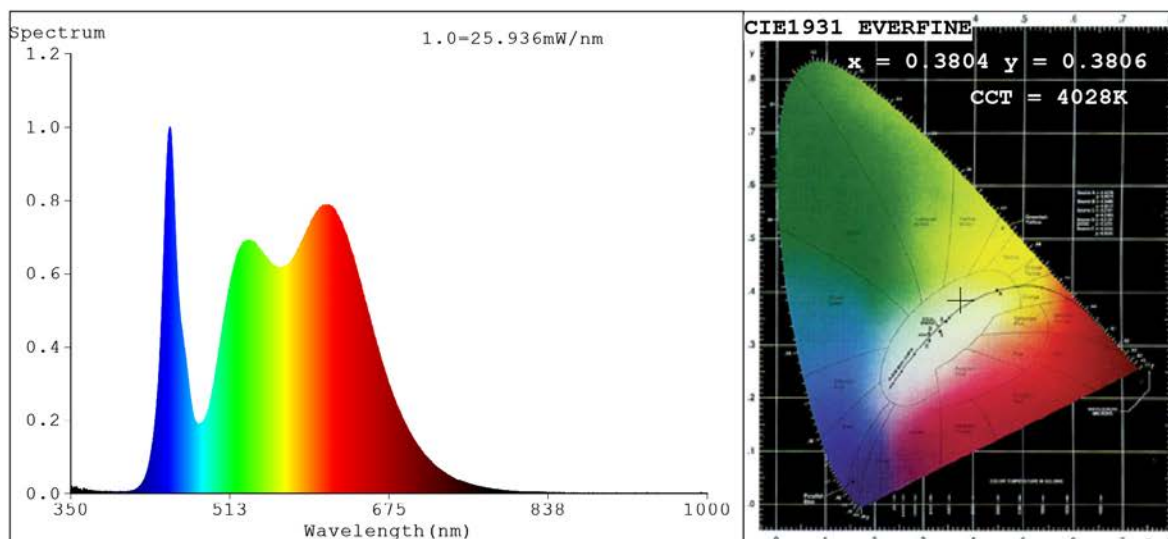


## Spectrum Test Report



### Color Parameters:

Chromaticity Coordinate:  $x=0.3804$   $y=0.3806$   $u'=0.2235$   $v'=0.5033$   
 CCT=4028K(Duv=0.0018) Dominant WL:Ld =578.0nm Purity=28.4%  
 Ratio:R=19.9% G=76.8% B=3.3%;;Peak WL:Lp=451.2nm FWHM=18.3nm  
 Render Index:Ra=91.6 CRI=86.8 TM30:Rf=90 Rg=100  
 R1 =94 R2 =93 R3 =90 R4 =94 R5 =92 R6 =90 R7 =94  
 R8 =85 R9 =57 R10=81 R11=93 R12=64 R13=94 R14=94 R15=90

### Photo Parameters:

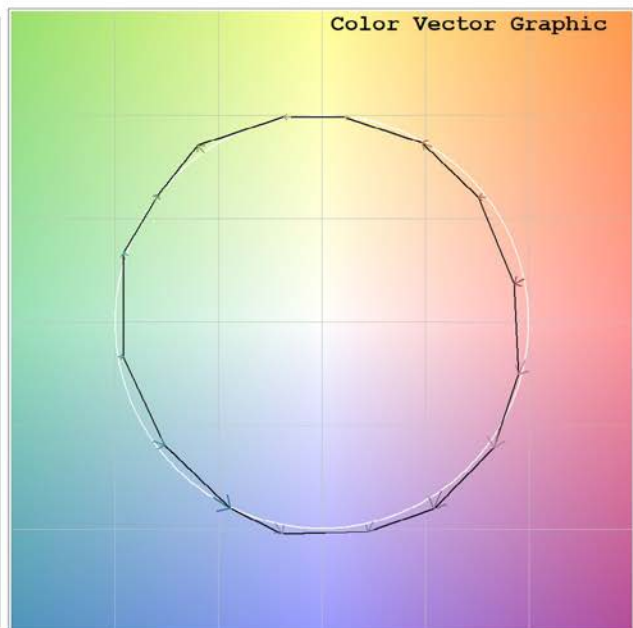
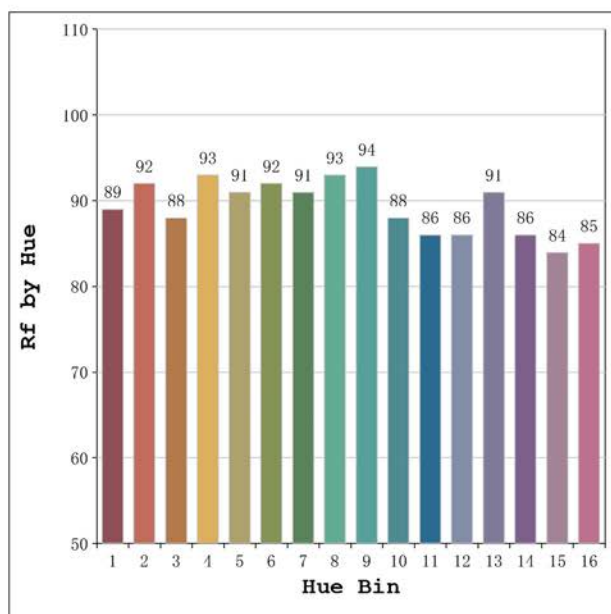
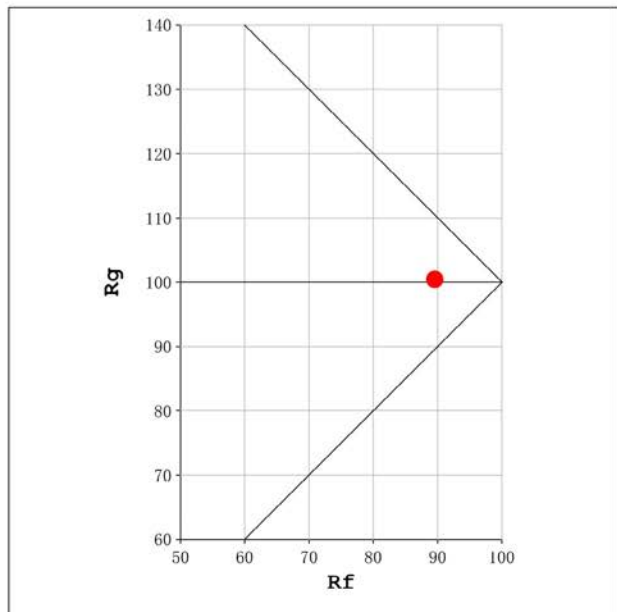
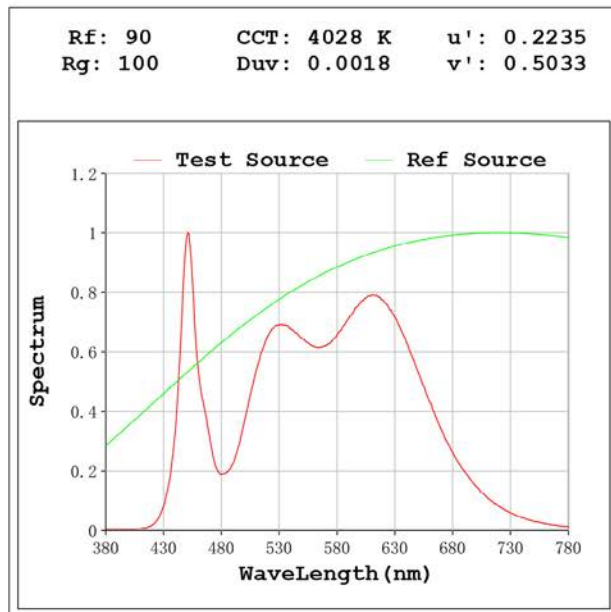
Flux = 1203 lm Eff. : 120.04 lm/W Fe = 3.857 W

### Electrical parameters:

V = 23.998 V I = 0.4176 A P = 10.02 W PF = 1.000

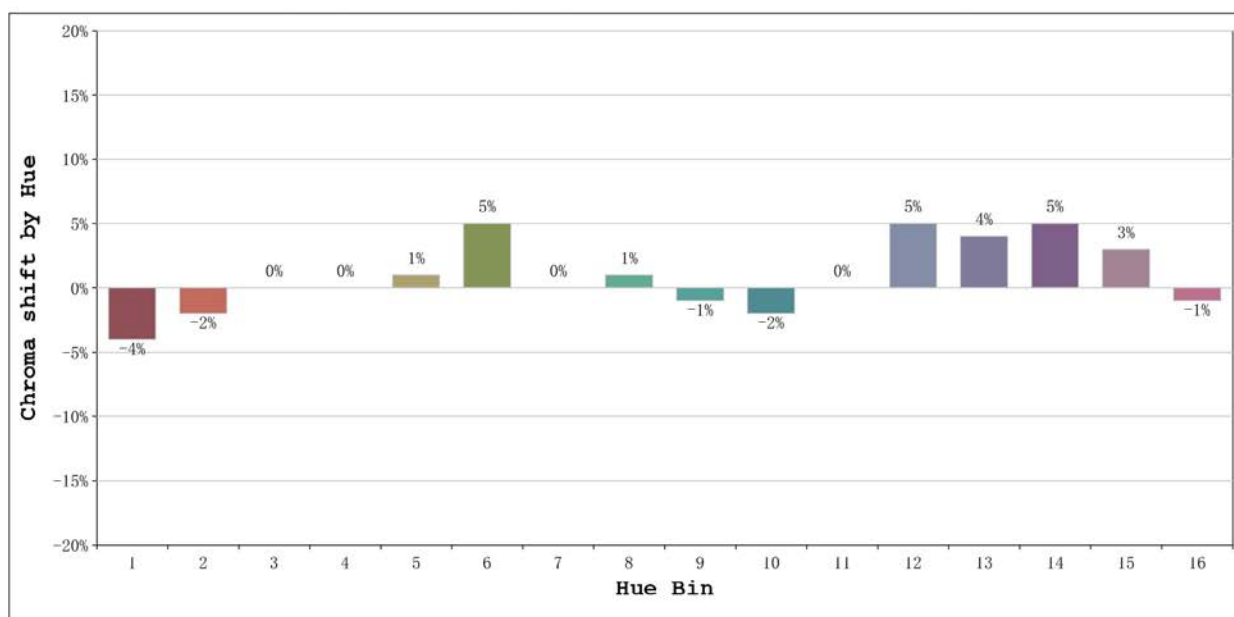
Status: Integral T = 1000 ms Ip = 39723 (61%)

Model:Ecoled Élite 10 Gold 4000	Number: 31.165
Tester:Sergio Carneros	Date:2025-02-12 13:28:31
Temperature:20Deg	Humidity:50%
Manufacturer:Luz Negra	Remarks:100cm de tira flexible



Model:Ecoled Élite 10 Gold 4000  
 Tester:Sergio Carneros  
 Temperature:20Deg  
 Manufacturer:Luz Negra

Number: 31.165  
 Date:2025-02-12 13:28:31  
 Humidity:50%  
 Remarks:100cm de tira flexible



			Graphic shift(%)	
Hue Bin	Hue Angle	Rf	Chroma	Hue
1	0.0° - 22.5°	89	-4	0
2	22.5° - 45.0°	92	-2	2
3	45.0° - 67.5°	88	0	5
4	67.5° - 90.0°	93	0	3
5	90.0° - 112.5°	91	1	3
6	112.5° - 135.0°	92	5	0
7	135.0° - 157.5°	91	0	-3
8	157.5° - 180.0°	93	1	-3
9	180.0° - 202.5°	94	-1	0
10	202.5° - 225.0°	88	-2	5
11	225.0° - 247.5°	86	0	10
12	247.5° - 270.0°	86	5	5
13	270.0° - 292.5°	91	4	-2
14	292.5° - 315.0°	86	5	-7
15	315.0° - 337.5°	84	3	-8
16	337.5° - 360.0°	85	-1	-6

Model:Ecoled Élite 10 Gold 4000 Number: 31.165  
 Tester:Sergio Carneros Date:2025-02-12 13:28:31  
 Temperature:20Deg Humidity:50%  
 Manufacturer:Luz Negra Remarks:100cm de tira flexible